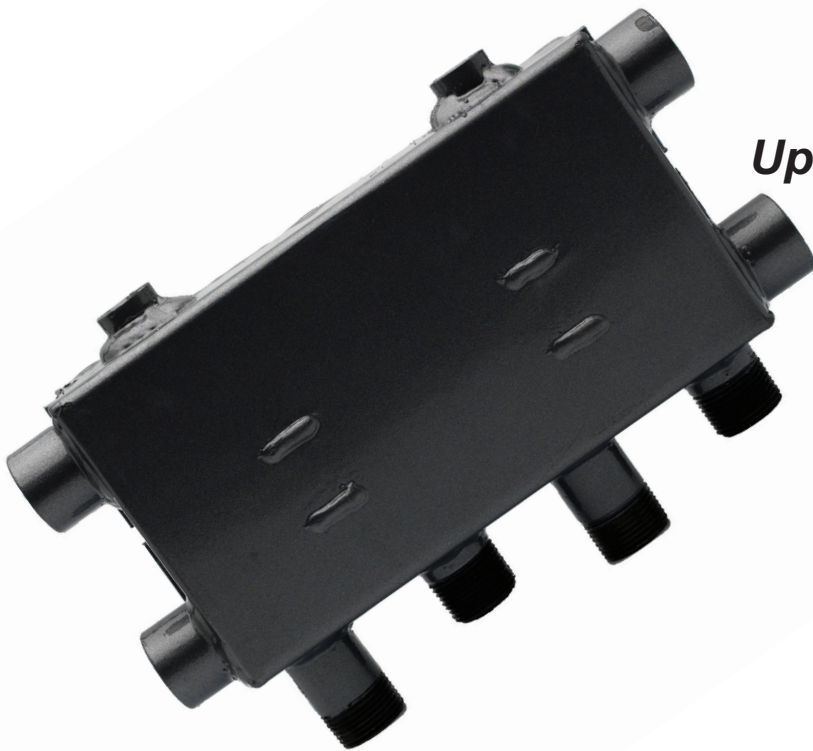


SystemZone 4

PATENTED

systemlink

ENERGY SAVING SOLUTIONS



The Easy Way To Zone Heating

*Up to three heating zones
and one boiler*

An Example System ...

Boiler

ZONE 1: *Radiators*

ZONE 2: *DHW*

ZONE 3: *Underfloor*

- Simple to install
- No need for motorised valves
- Opportunity for independent time and temperature control over multiple zones and hot water generation
- Zoning solutions from domestic to light commercial applications
- Compatible with oil, gas, solid fuel, heat pumps & solar
- Suitable for single or multi-boiler applications

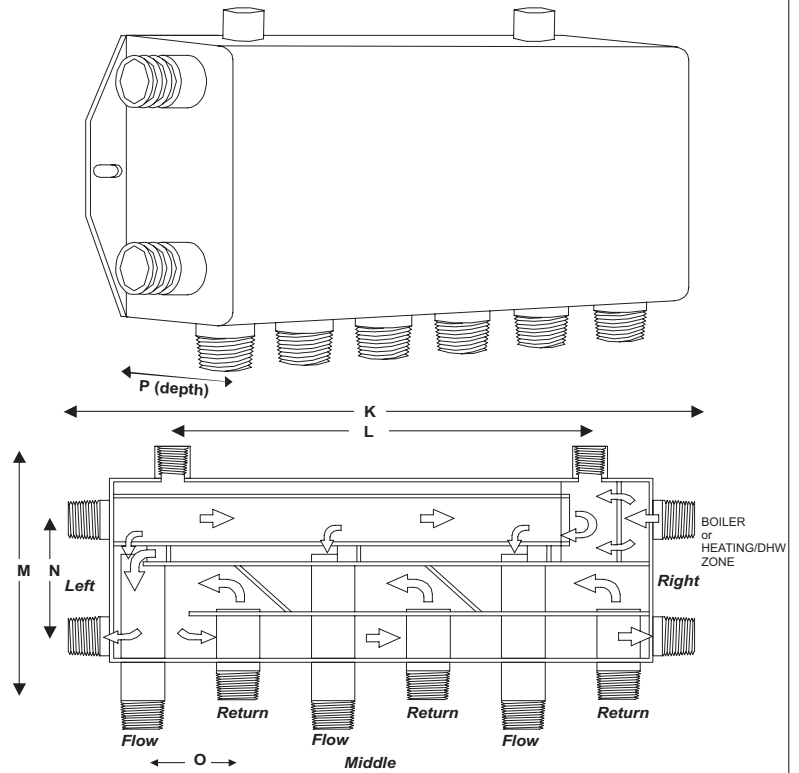
SystemZone

Fluid Collection and Distribution Manifold

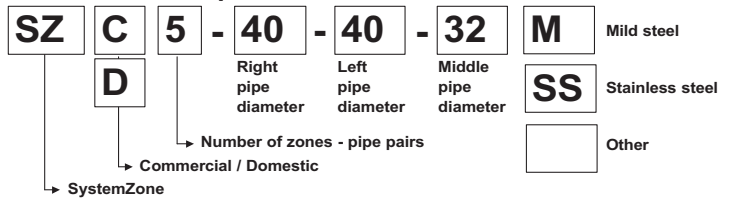
General information

SystemZone is a patented distribution manifold that collects heated or cooled fluid from one or more sources and distributes it to one or more zones. The unit illustrated here is designed for water circulation, but the unit is suitable for water, air or other fluids. Pumps are used to circulate the fluid and safety routes are always open. SystemZone is a cheap and simple alternative to custom designed, valve controlled zoning methods.

- SystemZone isolates and controls heating water collection and distribution circuits. Each circuit is independent of all others – no water flows if the circuit's pump is not operating. This makes for simple design and fault-free installation.
- SystemZone stratifies hot and cold water, ensuring that zones draw from only the hottest water. This improves efficiency and speeds up system heat-up time.
- SystemZone has connection points for ancillary safety devices, safety valves and expansion tanks. It has an unobstructed internal baffle system and contains no moving parts for long-term trouble-free use. SystemZone also eliminates the need for motorised valves and a system bypass.
- In a standard, simple configuration, one or two boilers may be connected to the SystemZone. SystemZone is ideal for efficiently connecting multiple types of heat generators including ground source heat, solid fuel stoves, solar heating, gas and oil boilers.
- SystemZone is particularly suited to systems where high velocity is required such as 'Micro-bore', one-pipe radiator systems and under-floor heating because it uses an individual pump for each zone. This means independent pump speeds may be selected to closely match a particular zone's water velocity requirements.
- SystemZone is suitable for the largest commercial, industrial and district heating applications. These use custom-made units scaled to the loads required. The SystemZone can also be used as a dosing pot for introducing chemicals to the system.
- SystemZone makes it simple to use multiple boilers because each boiler is automatically isolated from all the others without the need for valves. This allows specifiers of larger systems to easily reap the consequential benefits of reduced installation cost, lower running cost and improved reliability.



Product code explanation



- Simple system layout
- Built-in system bypass
- Superior system circulation
- Motorised valves not required
- Substantial labour and material savings
- Suitable for single or multi boiler applications
- Unobstructed cold feed, vent and expansion facility
- System pumps placed for optimum effectiveness
- Removes air from the system by design
- Extremely safe design

Technical Data

Description	Product code	Material	Pipe sizes (inches BSP)				Dimensions (cm)						Heat capacity (Kw) per zone*		
			Left	Rt	Mid	Top	K	L	M	N	O	P	Left	Rt	Mid
4 Port	SZD4-28-28-28 MS	Mild Steel	1	1	1	1/2	36.0	29.0	21.0	9.5	7.5	6.4	43	43	43
5 Port	SZD5-28-28-28 MS	Mild Steel	1	1	1	1/2	51.0	42.0	21.0	9.5	7.5	6.4	43	43	43
6 Port	SZD6-28-28-28 MS	Mild Steel	1	1	1	1/2	66.0	62.0	21.0	9.5	7.5	6.4	43	43	43
4 Port	SZC4-32-32-28 MS	Mild Steel	1 1/4	1 1/4	1	1/2	32.1	28.4	15.0	9.5	7.0	10.0	56	56	43
5 Port	SZC5-32-32-28 MS	Mild Steel	1 1/4	1 1/4	1	1/2	46.1	42.5	15.0	9.5	7.0	10.0	56	56	43
6 Port	SZC6-32-32-28 MS	Mild Steel	1 1/4	1 1/4	1	1/2	60.1	56.4	15.0	9.5	7.0	10.0	56	56	43
4 Port	SZC4-40-40-32 MS	Mild Steel	1 1/2	1 1/2	1 1/4	1/2	42.0	39.8	18.0	11.7	10.0	12.5	87	87	56
5 Port	SZC5-40-40-32 MS	Mild Steel	1 1/2	1 1/2	1 1/4	1/2	62.0	58.6	18.1	11.7	10.0	12.5	87	87	56
6 Port	SZC6-40-40-32 MS	Mild Steel	1 1/2	1 1/2	1 1/4	1/2	82.0	78.6	18.1	11.7	10.0	12.5	87	87	56
4 Port	SZC4-50-50-32 MS	Mild Steel	2	2	1 1/4	3/4	52.2	50.0	20.0	12.5	12.5	15.0	137	137	56
5 Port	SZC5-50-50-32 MS	Mild Steel	2	2	1 1/4	3/4	77.2	74.2	20.0	12.5	12.5	15.0	137	137	56
6 Port	SZC6-50-50-32 MS	Mild Steel	2	2	1 1/4	3/4	103.7	100.7	20.0	12.5	12.5	15.0	137	137	56
4 Port	SZC4-50-50-40 MS	Mild Steel	2	2	1 1/2	3/4	52.2	50.0	20.0	12.5	12.5	15.0	137	137	87
5 Port	SZC5-50-50-40 MS	Mild Steel	2	2	1 1/2	3/4	77.2	74.2	20.0	12.5	12.5	15.0	137	137	87
6 Port	SZC6-50-50-40 MS	Mild Steel	2	2	1 1/2	3/4	103.7	100.7	20.0	12.5	12.5	15.0	137	137	87

* Recommended maximum levels with water at velocity 1.5m/sec and 11 degC designed temperature differential.
 Note: Specifications may change without notice due to product development. Please refer to latest product data sheets.

SystemLink Limited

C2, South City Business Centre, Tallaght, Dublin 24
 Tel: +353 (0) 1 452 8301 Fax: +353 (0) 1 413 7777
 email: info@systemlink.ie Web: www.systemlink.ie