

systemlink
Technologies

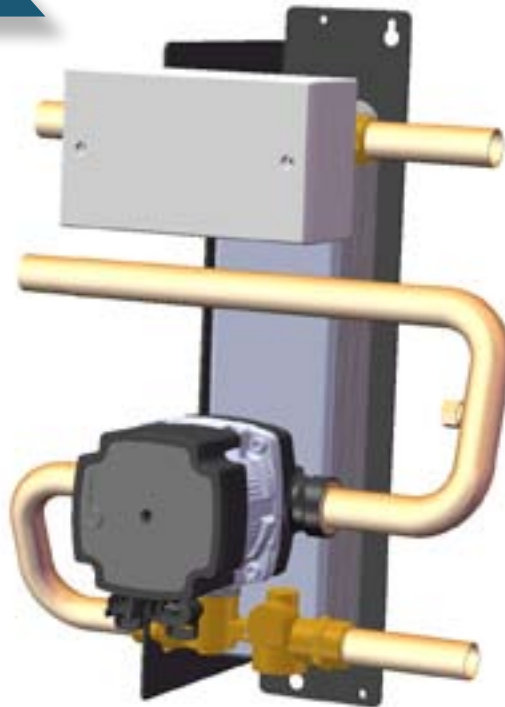
HOT WATER MADE SIMPLE

AQUAEKO



AVAILABLE AS 3 PRODUCTS

- AQUAEKO FULL PACK (INCLUDES SPECIALIST AQUAEKO CYLINDER)
- AQUAEKO RETROFIT PACK (FITS TO EXISTING CYLINDER)
- AQUAEKO MULTI-ZONE CLOCK WITH WEB ENABLED APP



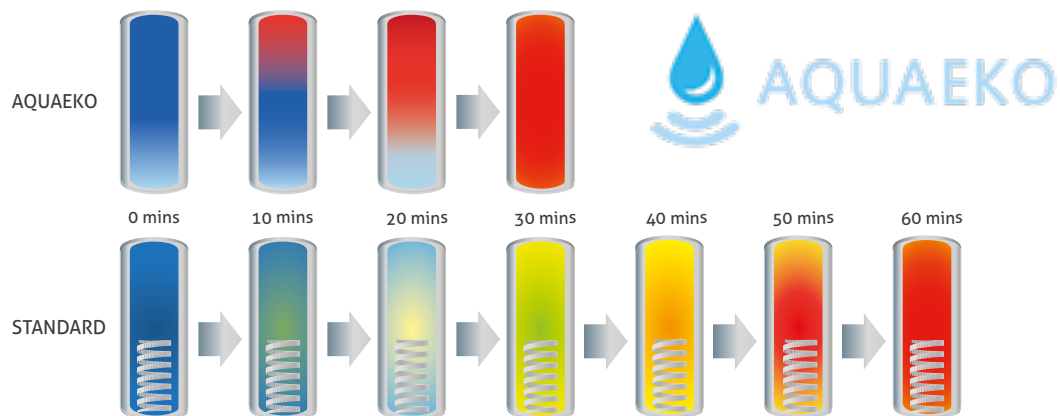
AQUAEKO IS A REVOLUTIONARY NEW INTELLIGENT SYSTEM FOR HEATING AND HOT WATER

The quickest, most efficient and least expensive way to heat your home and hot water, all controlled by you from anywhere with the AquaEko App. Get the combined benefits of instantaneous and stored hot water.

With the AquaEko App you can manage home heating zones, change thermostat temperatures and set timers. You will no longer have to worry about over priced bills or waiting around for your water to heat up.

If you would like to control your home heat from anywhere and save up to 50% on bills contact our service team for advice on an AquaEko installation.

AQUAEKO COMPARED WITH A STANDARD CYLINDER SIDE BY SIDE OVER TIME



Systemlink's patented AquaEko system fills the cylinder from the top down with hot water, which thanks to an intelligent control system allows the user to heat precisely the volume of water they require when they require it: saving energy and reducing water consumption.

AquaEko gives you the ability to fill your DHW cylinder from 1% to 100% with clean domestic hot water based on gas, oil or electric heat sources.

AquaEko massively decreases recovery time for the cylinder. A typical cylinder takes more than an hour for water to be generated to a sufficiently high temperature for use in showers and baths. With AquaEko this is reduced to minutes.

AquaEko allows you to fully zone your house to allow for a highly energy efficient home. Up to 50 zones available using our wireless zone add-on devices.

Aquaeko is a fully internet enabled device with accompanying smartphone app to allow for full control of your heating system from anywhere in the world. There is a 5 inch touchscreen mounted to your wall for control at home.



Available in a range of attractive colours to blend in with your home interior*

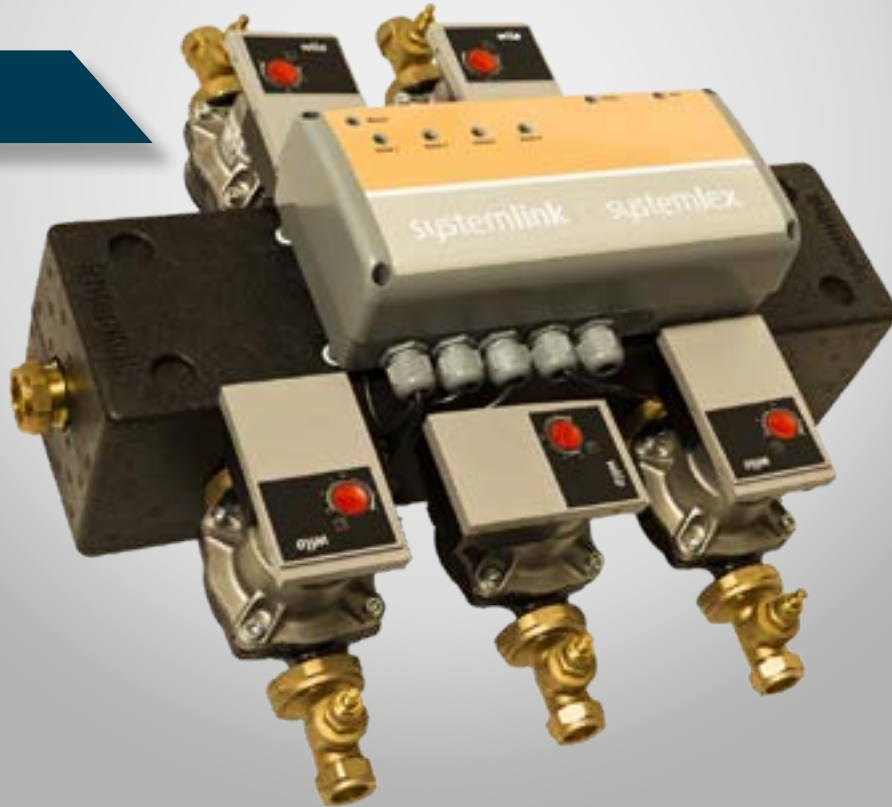
AquaEko allows for a precise volume of domestic hot water to be heated as it is required, from 1% up to 100% of the cylinder's volume. A traditional cylinder will heat every drop of the water it contains, even if some of that will simply sit in the tank going cold again.

Contact us if you would like to control your home heat from anywhere and save up to 50% on bills. Visit us on www.systemlink.eu email us on info@systemlink.eu or contact our service team on +353-1-4031200



AN ALL-IN-ONE PRE-PLUMBED PLUG AND PLAY PACKAGE
FOR THE FASTEST SAFEST INSTALLATION

SPIROLINK



Systemlink's unique patented zoning devices greatly simplify the design and installation of heating zones – saving time and money for building professionals.

Spirolink has transformed home zoning and link-up.

It provides all the advantages of a low loss header, whilst fully zoning your central heating system.

It eliminates issues of radiator balancing, pumping against dead head and linking together multiple boilers, common in other methods of zoning.

Low total cost of ownership, with very rare repair issues due to the use of high quality components.

Architects and specifiers use this system in their homes above any other as they are in the know!

SPIROLINK TRANSFORMS HOME ZONING AND LINK-UP

SPIROLINK

Heats your Home faster than any other system.

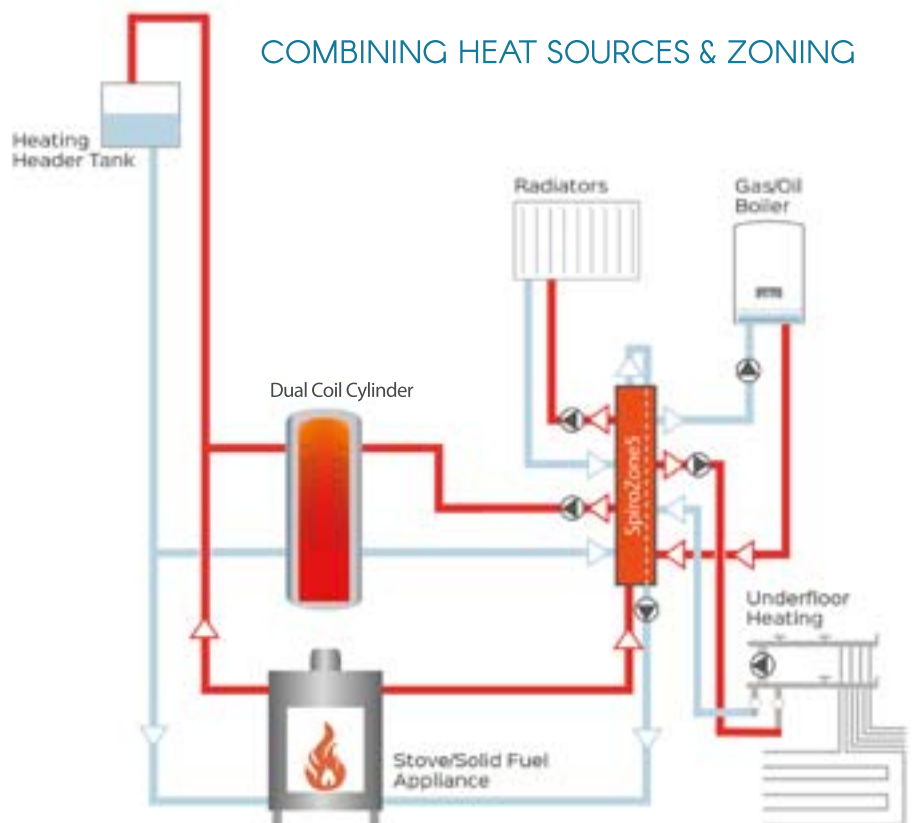
Dramatically reduces your fuel bill – low installation cost.

Hassle-Free Assembly

Fully assembled including pumps, wiring centre, fittings and insulation –no need to buy and fit pumps, valves, fittings, wiring centres.



COMBINING HEAT SOURCES & ZONING



Optimal Heat Distribution

Easily combine all heat sources and zones including multiple boilers in the fastest time (Gas, Oil, Stove, Range, Heat Pump, Pellet Boiler).

Easy system balancing due to the neutral pressure point in the Spirolink manifold.

Intuitive System

Spirolink has a simple layout with built-in system bypass. Available in 4, 5, 6 & 7 sets of ports.

Kit Includes:

- Pumps
- Pump Valves
- Fittings
- Systemlex Wiring Center

FOR THE SAFEST, MOST EFFICIENT AND MOST CONTROLLABLE STOVE OPERATION

HEAT GENIE



Heat Genie allows a stove to be installed without digging up floors or pulling down ceilings.

The Heat Genie method of stove installation ensures safer, more efficient and more controllable stove operation than conventional methods.

Pressurised heating and hot water is safely achievable with Heat Genie.

Contact us for advice on any existing or proposed stove installation.

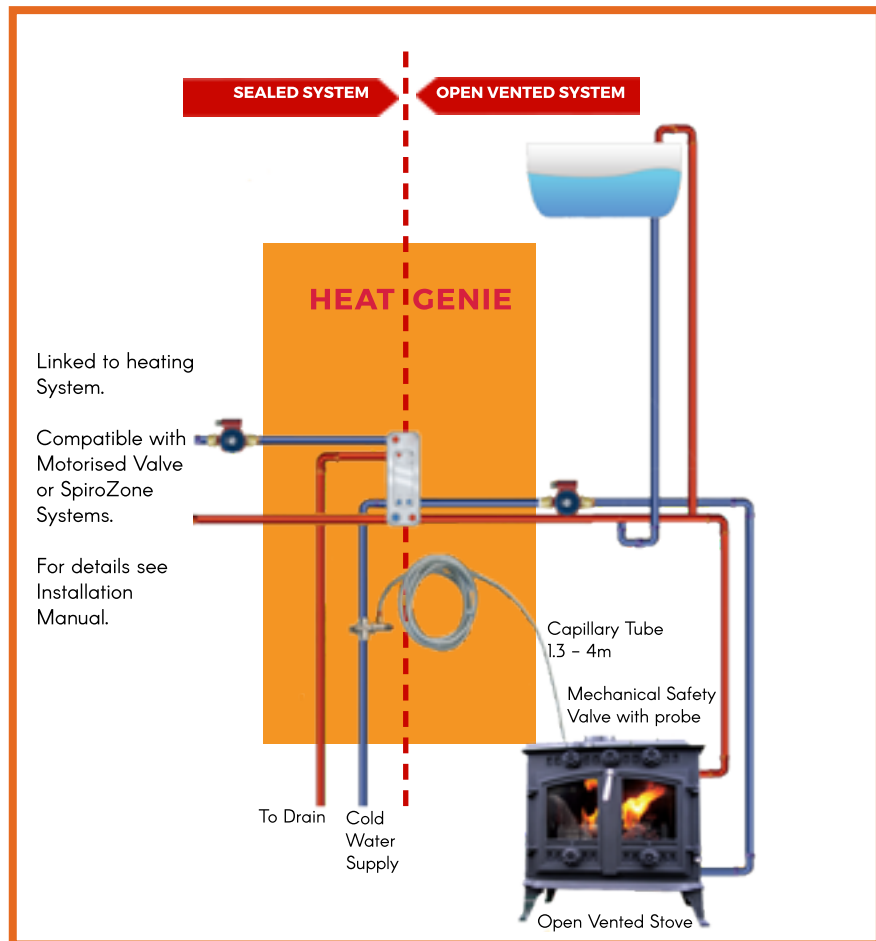
THE HEAT GENIE IS THE ULTIMATE IN BOILER STOVE LINK UP

HEAT GENIE

Suitable for use in pressurised or open heating system.

Heats your home faster than any other system.

Dramatically reduces your fuel bill – low installation cost.



Please note diagrams are for illustration purposes only, for technical schematics please refer to the product manual or contact us directly.

Safe and Easy

- Suitable for use in both pressurised and open vented heating systems.
- Install a stove safely where previously impossible.
- Prolongs the stove's life.
- No need to replace cylinders or install heat leak radiators.
- The Heat Genie provides 3 levels of protection.

Combine Heat Sources

- No need to purchase an expensive new cylinder or thermal store to link-up your stove.
- Link an open vented stove safely into a pressurised heating system.
- You can combine your solid fuel stove with gas and oil boilers, heat pumps, underfloor heating and pressurised or open vented central heating.

SYSTEMLINK - THE EASY WAY TO ZONE HEATING

SystemLink



SystemLink dramatically reduces time required to install a zoned system

SystemLink combines two patented elements to deliver a totally pre-plumbed, pre-wired solution for zoned heating and multiple boiler link-up.

SystemLink contains:

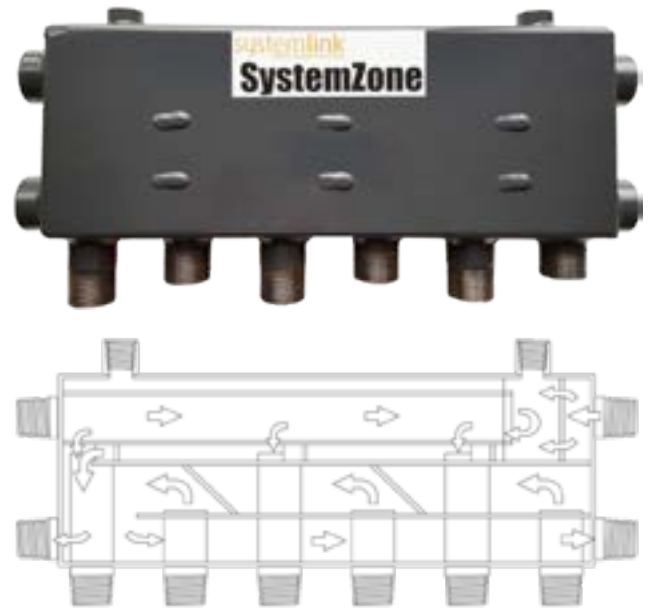
- Systemzone manifold
- Zone circulation pumps
- SystemLex pre-configured wiring centre
- Automatic air vent
- Safety valve

Also available with HomeZone 3-channel clock.

SYSTEMZONE - THE SOLUTION TO ZONING COMMERCIAL AND DOMESTIC

Domestic Systemzone

- Connects multiple heat sources to multiple zones
- No need for unreliable motorised valves
- High reliability due to no moving parts
- Compatible with gas, oil, solid fuel, heat pumps and solar
- Can be pressurised or open vented
- Available in 4, 5 & 6 sets of ports

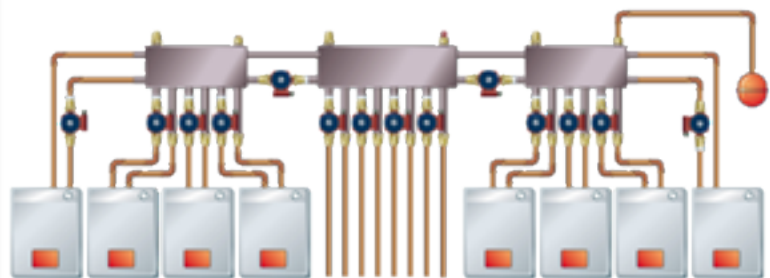


Systemzone manifolds come in a range of commercial sizes with increased port sizes up to 80mm which is sufficient for the vast majority of commercial installations.

The manifolds can be daisy-chained off each other to scale from the smallest to the largest of installations, and can be a very reliable and cost effective method of installation.

Commercial Systemzone

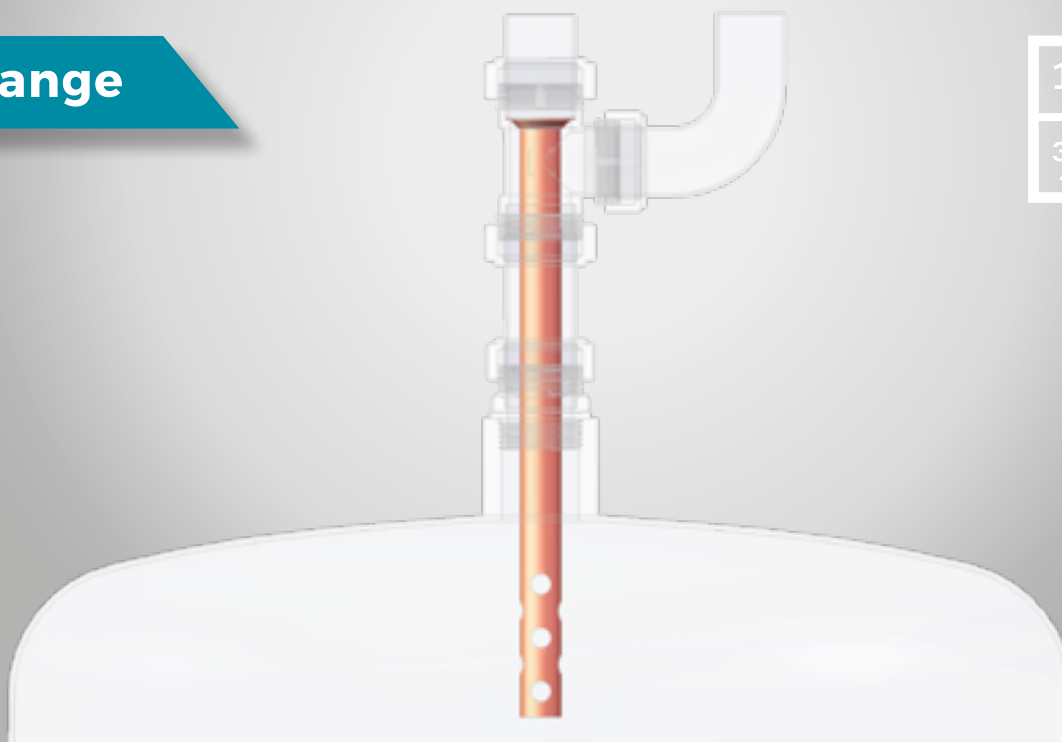
This image shows banks of conventional boilers all linked together and distributing out to multiple zones.



Using multiple conventional boilers instead of one large boiler allows for cheaper installations that have a higher level of redundancy, are more easily serviceable and far more cost effective to run.

DE-AERATES THE PUMPED OUTLET AND PREVENTS AIR BEING DRAWN DOWN THE EXPANSION PIPE BY THE PUMP

Multi-Flange



1" / 28mm

3/4" / 22mm

Multi-flange – suitable for metric and imperial

Use to Replace:

- Injector Tee
- Cylinder Flange
- Warix Flange
- Surrey Flange
- York Flange
- Essex Flange (Tank connector as secondary return)

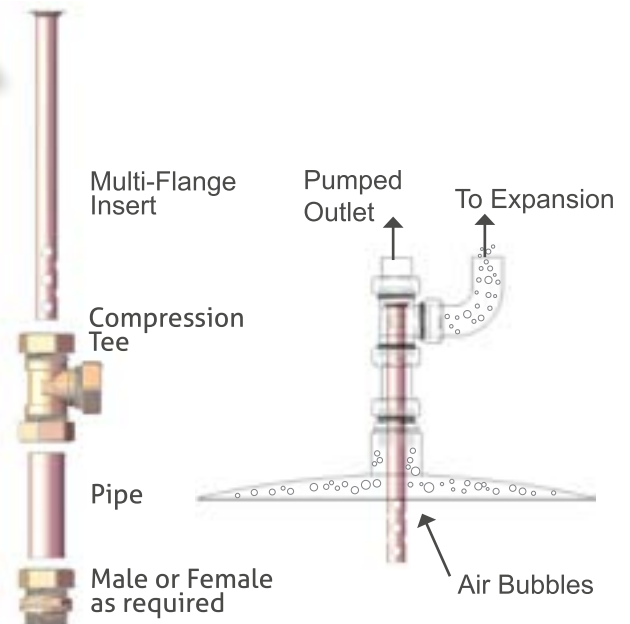


Multi-Flange
PATENTED

1 HOW TO USE A MULTI-FLANGE IN PLACE OF A CYLINDER, WARIX, SURREY, YORK FLANGE:

ALL OF THESE FLANGES ARE USED TO DE-AERATE THE PUMPED OUTLET FROM THE HOT WATER CYLINDER.

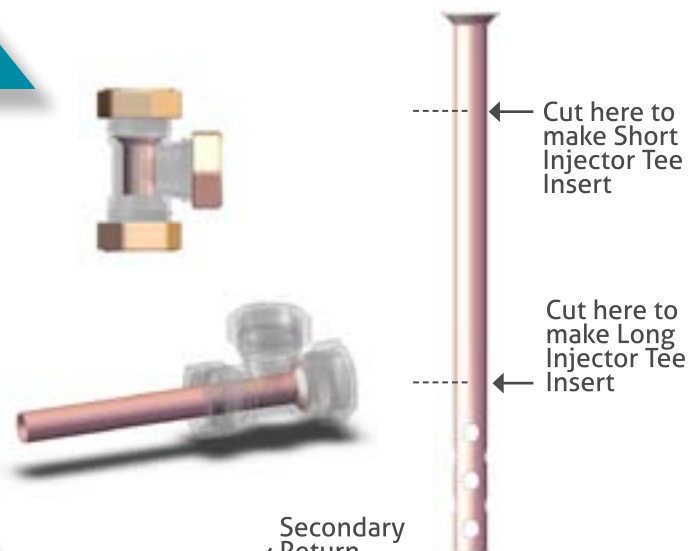
1. Screw a male or female BSP x Compression coupler into the top of the hot water cylinder depending on whether it is a male or female connection.
2. Place Multi-Flange Insert into standard Compression Tee.
3. A pipe stub inserted between the Tee and the BSP x Compression coupler can be adjusted to length to vary the insertion distance of the Flange into the cylinder body.
4. Usually a stub length of approx. 80mm is suitable.
5. When a pipe is inserted into the top side of the Tee labeled "Pumped Outlet", push it fully home against the Multi-Flange Insert as this will hold it securely in place.



2 HOW TO USE A MULTI-FLANGE TO CREATE AN INJECTOR TEE:

A 1" / 28MM INJECTOR TEE IS MOST COMMONLY USED AS THE RETURN TEE IN SOLID FUEL INSTALLATIONS.

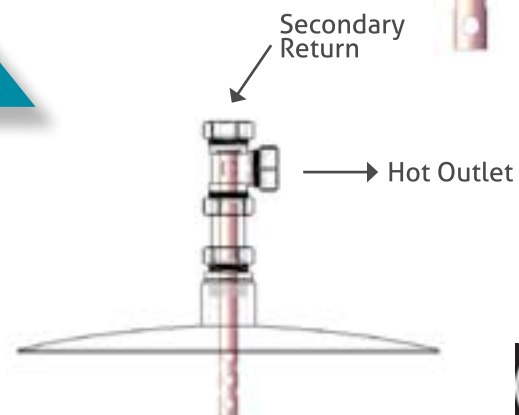
1. The Multi-Flange Insert can be cut to size and placed into a standard Compression Tee to make an Injector Tee. Clean and deburr after cutting.
2. When a pipe is inserted into the Tee against the collar of the Multi-Flange Insert, push it fully home as this will hold the Insert securely in place.



3 HOW TO USE A MULTI-FLANGE IN PLACE OF AN ESSEX FLANGE:

AN ESSEX FLANGE IS USED TO PROVIDE AN EXTRA CONNECTION FOR A SECONDARY RETURN TO A HOT WATER CYLINDER.

1. A Multi-Flange Insert incorporated as described above but with connections terminated as shown across (right) can replace an Essex Flange (Tank Connector).



THE INTELLIGENT ZONED WIRING CENTRE

SYSTEMLEX



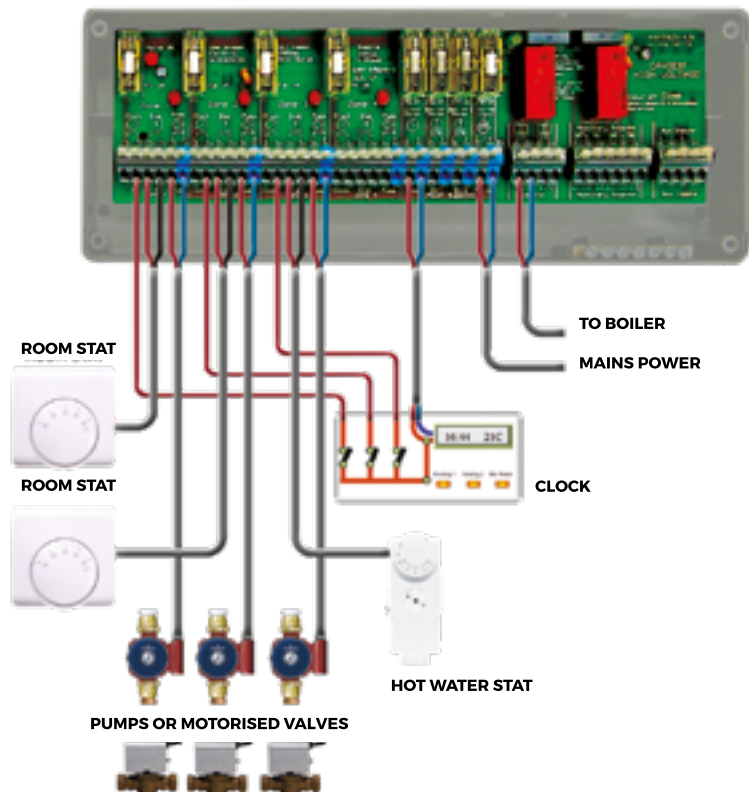
SystemLex is a pre-configured electronic wiring centre that connects the controls (clocks and thermostats), pumps and boilers together in a logical and easy to understand way. SystemLex does all the complex cross wiring for the installer - all that is left is to connect the system direct to the board.

Systemlex Intelligent Wiring Center.

- Connect up to four heating zones and two heat sources. Cascade multiple SystemLex's for larger installations.
- Simplifies wiring of multiple heat sources and heating zones.
- Easier to set up. Pre-fused power supply with independently fused zone provision and clearly identified terminals for clock and thermostat connections.
- Suitable for gas, geothermal, oil and solid fuel installations – pumps or motorised valve systems.
- LEDS indicate correct operational status and assist fault finding.
- Versatile – works with all clocks, thermostats and programmers.
- Designed with the electrician in mind, featuring push fit wiring terminals.
- Smart solid fuel control switch.

SYSTEMLEX

THE INTELLIGENT ZONED WIRING CENTRE



- With built-in auxiliary control features.
- Eliminates the complexities associated with wiring zoned heating.
- Pre-fused power supply with independently fused zones.
- Easy to understand.
- Push fit wiring.
- Numbered and clearly identified wiring terminals for all system components.
- Built in indicator lights to identify power, zone and boiler call.
- Eliminates boiler dry cycling.
- Compliant with current building regulations.
- Automatically fires boiler when zone calls.

ELECTRILINK WIRELESS CONTROL SYSTEM

ELECTRILINK



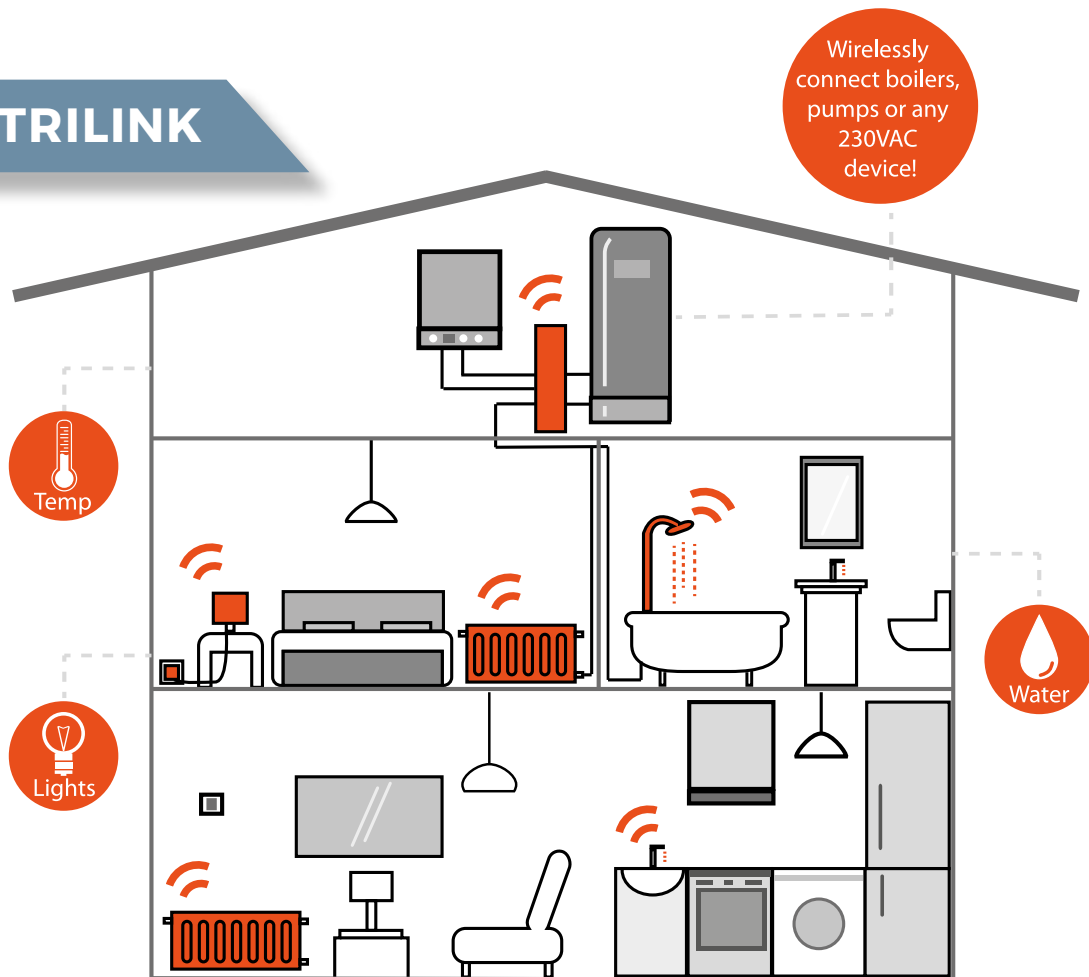
Wirelessly switch/connect almost any 230VAC device including, boilers, pumps, motorized valves, thermostats, lighting, SystemLex, multi-channel heating controllers and more

Electrilinek is an easy-to-install 4-channel radio transmitter.

- Radio transmitter mounted in 60 mm junction box
- Low power consumption, adapted to constant operation
- Possibility of independent control of four receivers
- Wide range of operation (up to 160m)

4-CHANNEL RADIO TRANSMITTER WITH EASY INSTALLATION AND UP TO 160M
OPERATION RANGE IN AN OPEN AREA

ELECTRILINK

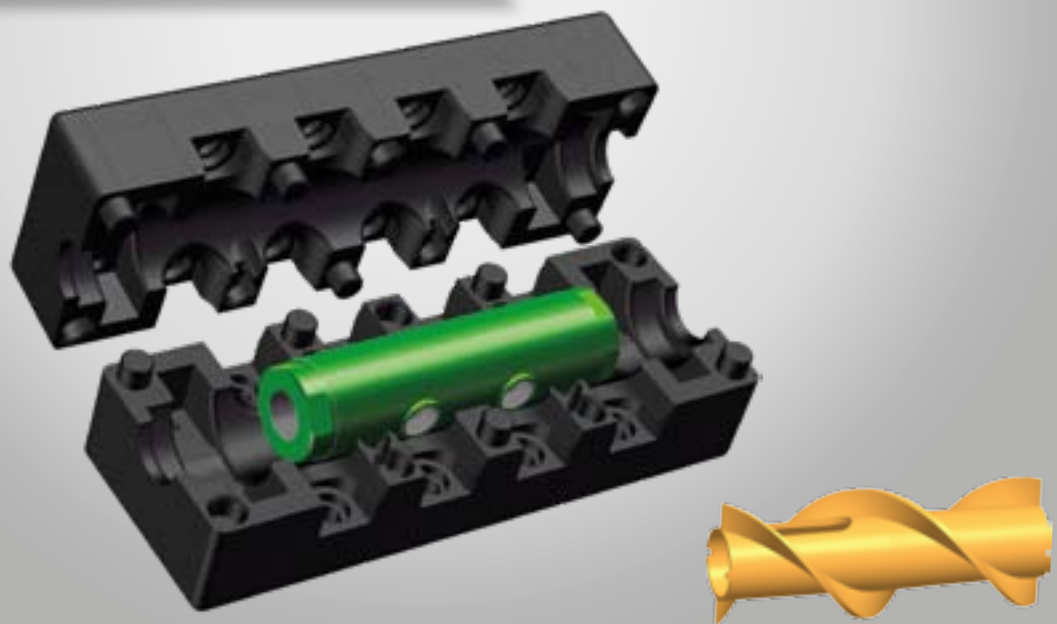


- Radio transmitter mounted in 60 mm junction box
- Possibility to wirelessly switch/connect almost any 230VAC device including boilers, pumps, motorized valves, thermostats, lighting, SystemLex, multi-channel heating controllers and more
- Low power consumption, suited to constant operation
- Possibility of independent control of four receivers
- Wide range of operation (up to 160m)



GET THE MAXIMUM EFFICIENCY FROM YOUR SOLID FUEL BOILER

SPIROLINK STOVEBOOSTER



Spirolink Stovebooster is a fully insulated manifold which gives more control over the division of flow rate (and therefore output) of a solid fuel appliance between central heating and domestic hot water.

Spirolink StoveBooster speeds up heat circulation.

No device can solve or should attempt to solve poor gravity circulation. In these circumstances we strongly advise the installation of a Heat Genie or Spirolink Zoning System.

Spirolink StoveBooster increases the circulation through the domestic hot water cylinder coil when the pump is operational as it is not just dependent on natural gravity circulation alone, as it is in a standard solid fuel system.

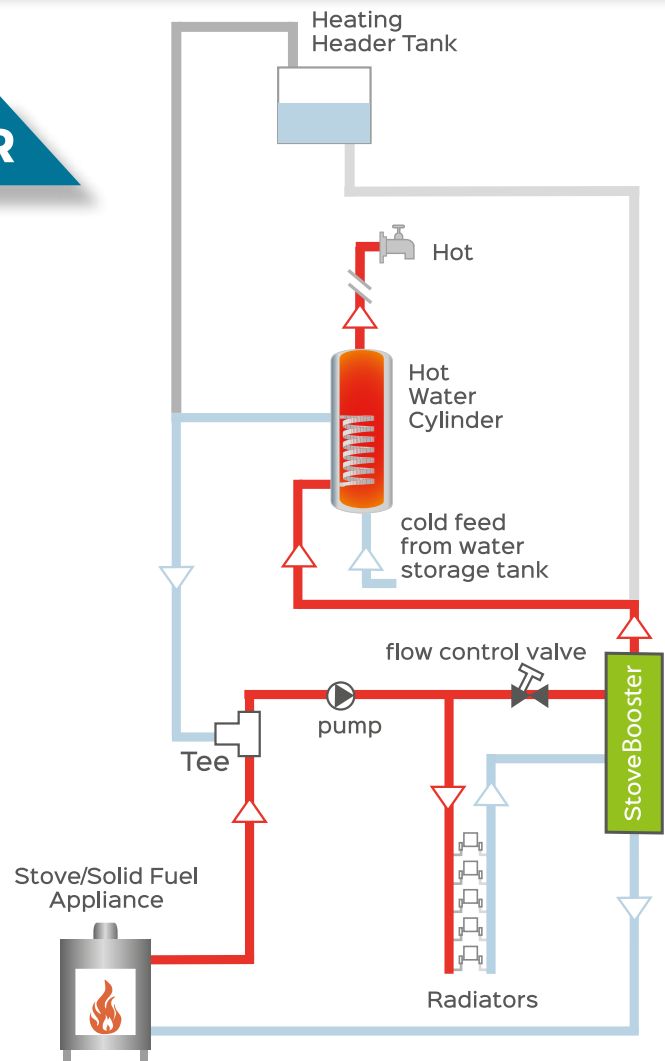
Spirolink StoveBooster does not interfere with the normal safety operation of the solid fuel appliance which operates on natural gravity in the event of a power cut or pump failure. It contains no moving parts.

Get the maximum efficiency from your Solid Fuel Boiler!

SPIROLINK STOVEBOOSTER SPEEDS UP HEAT CIRCULATION

SPIROLINK STOVEBOOSTER

- Increase heat circulation by up to 90% depending on how weak your existing gravity circuit is, giving more heat at a faster rate to the hot water cylinder and radiators
- Fully Insulated
- Pumped Domestic Hot water – not reliant on gravity circulation alone
- Increased flow to Domestic Hot Water
- Eliminate stove heat waste
- No moving parts
- Burn less fuel



We recommend running separate flow and return pipes from the Solid Fuel Boiler to both the cylinder (on gravity) and the circulation pump. This way full boiler temperature is sent to both hot water and heating with no mixing down of temperature.

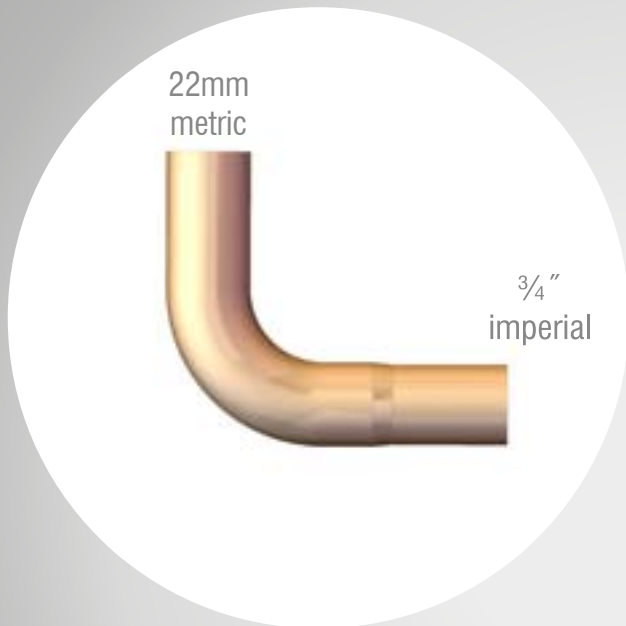
A Spirolink StoveBooster does not solve pre-existing gravity circulation problems. The gravity circuit's purpose is to safely take away the excess heat generated by a stove in the event of a power cut or pump failure.

A Heat Genie used in these situations instantly solves such problems. Please visit www.systemlink.eu for details.

- Maintenance Free
- Tough and Durable
- Prolongs stoves life span
- High Reliability
- Patented product
- Made in Ireland

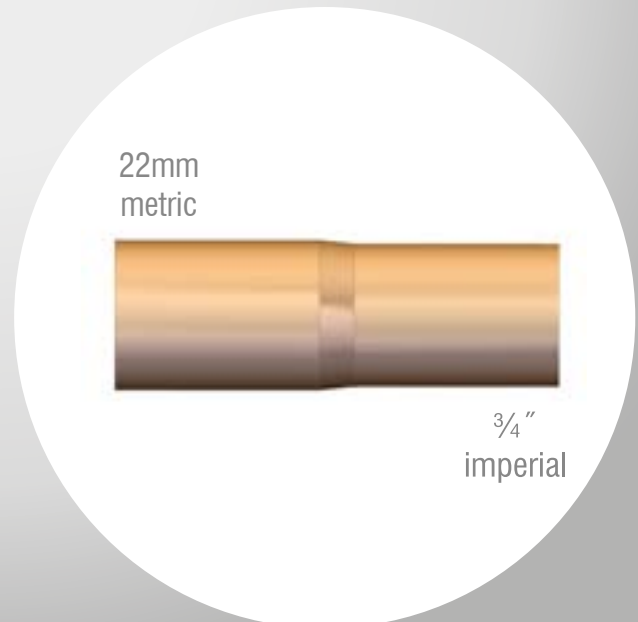
METRIC TO IMPERIAL PIPE ADAPTERS

PIPEDAPTER



Elbow Adapter

Straight Adapter



Use to convert boilers with Metric fittings, or anywhere where conversion from Metric to Imperial is required.

SPECIFICATIONS AND DIMENSIONS

Spirozone

Dimensions including Insulation	SpiroZone 3	SpiroZone 4/5	SpiroZone 6/7
Overall Length	233mm	390mm	533mm
Height	76.5mm	140mm	140mm
Width	76.5mm	138mm	138mm
Dimensions of Manifold without Insulation	SpiroZone 3	SpiroZone 4/5	SpiroZone 6/7
Length	233mm	373mm	513mm
Diameter	60.5mm	60.5mm	60.5mm
Weights	1.7kg	2.4kg	3.1kg
Distance between Flow/Return Connections on Manifold:			70mm

Insulation:

- Type: EPP Foam
- Nominal Thickness: 37mm
- Thermal Conductivity at 40°C: 0.041 W/mK

Materials: Mild Steel Main Body

Max Permissible Pressure: 4 bar

Maximum Total Permissible Flow Rate through manifold: 2 m³/h

End Connections Size and Type: 1" BSP Female Parallel Thread

Body Connections Size and Type: ¾" BSP Female Parallel Thread

Heat Genie

A space of 550mm X 330mm X 150mm (Height X Depth X Width) is required to install the Heat Genie.

Water Content:

	Stove Side (ml)	Heating Side (ml)	Cooling Side (ml)
15kW	693	468	125
20kW	810	585	125
30kW	1005	780	125

Heat Genie link-up systems are available in a range of sizes to suit different kW output stoves.

Insulation:

- Type: PU Rigid Foam
- Nominal Thickness: 20mm
- Thermal Conductivity: 0.0029 W/mK

Max Permissible Pressure: 4 bar

Source Connection Size and Type: 1" or 28mm Pipe Stubs*

Other Connections: ¾" or 22mm Pipe Stubs*

*Imperial for R.O.I. and Metric for U.K./N.I. Markets

more technical information can be found on the website www.systemlink.ie



Systemzone Commercial and Residential

DESCRIPTION	PRODUCT CODE	MADE OF	PIPE SIZES (INCHES BSP)				DIMENSIONS (CM)						HEAT CAPACITY *		
			Left	Rt	Mid	Top	K	L	M	N	O	P	Left	Rt	Mid
4 Port	SZD4-28-28-28 MS	Mild Steel	1	1	1	½	31.0	17.0	23.5	9.5	7.0	8	43	43	43
5 Port	SZD5-28-28-28 MS	Mild Steel	1	1	1	½	45.0	31.0	23.5	9.5	7.0	8	43	43	43
6 Port	SZD6-28-28-28 MS	Mild Steel	1	1	1	½	59.0	45.0	23.5	9.5	7.0	8	43	43	43
4 Port	SZC4-32-32-28 MS	Mild Steel	1 ¼	1 ¼	1	½	36.5	17.0	23.5	9.5	7.0	8	56	56	43
5 Port	SZC5-32-32-28 MS	Mild Steel	1 ¼	1 ¼	1	½	50.5	31.0	23.5	9.5	7.0	8	56	56	43
6 Port	SZC6-32-32-28 MS	Mild Steel	1 ¼	1 ¼	1	½	64.5	44.5	23.5	9.5	7.0	8	56	56	43
4 Port	SZC4-40-40-32 MS	Mild Steel	1 ½	1 ½	1 ¼	½	46.0	26.5	26.0	11.7	10.0	12.5	87	87	56
5 Port	SZC5-40-40-32 MS	Mild Steel	1 ½	1 ½	1 ¼	½	66.0	46.5	26.0	11.7	10.0	12.5	87	87	56
6 Port	SZC6-40-40-32 MS	Mild Steel	1 ½	1 ½	1 ¼	½	86.5	66.5	26.0	11.7	10.0	12.5	87	87	56
4 Port	SZC4-50-50-32 MS	Mild Steel	2	2	1 ¼	¾	60.0	38.5	28.0	12.5	12.5	15.0	137	137	56
5 Port	SZC5-50-50-32 MS	Mild Steel	2	2	1 ¼	¾	85.0	63.0	28.0	12.5	12.5	15.0	137	137	56
6 Port	SZC6-50-50-32 MS	Mild Steel	2	2	1 ¼	¾	110.0	88.0	28.0	12.5	12.5	15.0	137	137	56
4 Port	SZC4-50-50-40 MS	Mild Steel	2	2	1 ½	¾	60.0	38.5	28.0	12.5	12.5	15.0	137	137	87
5 Port	SZC5-50-50-40 MS	Mild Steel	2	2	1 ½	¾	85.0	63.0	28.0	12.5	12.5	15.0	137	137	87
6 Port	SZC6-50-50-40 MS	Mild Steel	2	2	1 ½	¾	110.0	88.0	28.0	12.5	12.5	15.0	137	137	87

* Heat Capacity based on water velocity of 1.5m/s and ΔT 11K

NOTE: SPECIFICATIONS SUBJECT TO CHANGE



sketchpad

systemlink
Technologies

+353 1 403 1200 UK: + 44 1244457818
info@systemlink.eu www.systemlink.eu