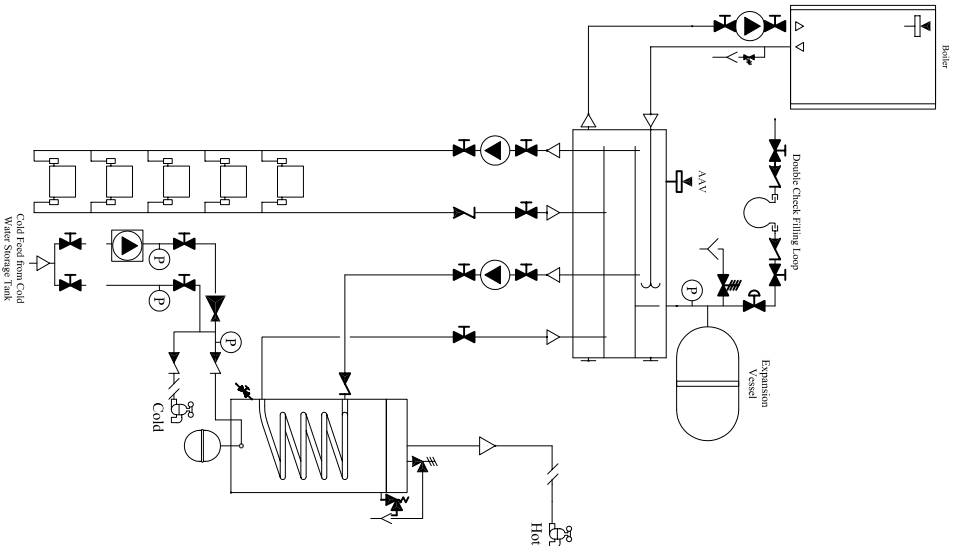


Information

Notes

Non-return valves are required on Systemlink's outward zone flow pipe-work only when the zone to be piped is at a higher level than the Systemlink. In that situation, a non-return valve must be positioned in front of the zone pump. This will prevent the creation of a gravity fed, thermo-siphoning loop, which would cause continued supply of heated water to the radiators in that zone, even when the zone's pump is no longer required and has been switched off.

This schematic shows the key components in the mechanical system and the list of materials shown is not exhaustive. All systems should be installed by a qualified installer and should be installed in accordance with building regulations. Systemlink will not be held responsible for any errors shown in the schematic.



LEGEND

- Motorised Valve
- Isolating Valve
- Safety Valve
- Non Return Valve
- Pressure Relief Valve
- Oil Fire Slam Valve
- Temperature Relief Valve
- Pressure Regulating Valve
- Flow Regulating Valve
- Pressure Reducing Valve
- Temperature Mixing Valve
- Automatic Air Valve
- Pressure Gauge
- Temperature Gauge
- Temperature Sensor

- Oil Tank Filter
- Strainer
- DW Pressurisation Pump
- Drain Cock
- Circulating Pump
- Gas Slam Valve
- Binder Test Point
- Direction Arrow
- Hi-Pressure Switch
- Low Pressure Switch

Example: Heating Schematic
1 Gas Boiler, 1 Radiator Zones, 1 DHW Zone

Scale: NTS

Rev: 001

Drawing No. 01001010

Systemlink
C2 South City Business Centre,
Tallaght, Dublin 24
Tel: 00-353-(0)1 4031200
Fax: 00-353-(0)1 4137777
e:mail, info@systemlink.ie
e:mail, info@systemlink.co.uk